

# CM 無塵室吊車 Clean Room Hoist

CMCO 提供了 CM Lodestar 電動鍊條吊車，使用在無塵室，從食品到電路板組合，不管作業環境是否高濕度、有腐蝕性、衛生情況，Lodestar 提供了優越和多用途的性能。

從不銹鋼鍊條到油封，防水結構，Lodestar 超越了無塵室的標準，使用不氧化油取代一般滑油，絕不滴油，不銹鋼鍊條蓋，不會有鐵屑剝落，可以使用在食品、藥物、或電子工廠，如有興趣可上網查閱：

<http://www.cmindustrial.com/cleanroomhoist.asp>

- 1/2，1/4，1，2 噸 單速、雙速吊車
- 載重鍊,上、下鉤頭組合，和鍊袋為不銹鋼製(2 噸吊車只有鍍鋅鍊條)
- FDA 認可(符合美國 FDA 食品藥品部門規定)，使用白色環氧粉體塗層外表，也可以無油漆鑄鋁外殼或電氣鍍鋅外殼附環氧油漆
- NEMA 4 或 NEMA 4X 押扣開關
- 防水防塵油封，不氧化黃油
- 115/230 單相電壓，和 230/460-3 相電壓
- 公製荷重
- 終身保固



# 無塵室吊具配件 **Lifting Components for Clean Room**

## 不銹鋼鍊條



尺寸 9/32" 到 1/2"(7 到 13mm)

安全荷重

到 6500LB(2,950KG)

- 300 系列不銹鋼
- 比 HA800 更耐高溫
- 安全的使用在食品工業
- 可以容易的和其他配件組成單串或雙串吊鍊組
- 比合金材料更不易腐蝕

## 主吊環



尺寸 9/32" 到 1/2"(7 到 13mm)

安全荷重

到 13,000LB(5,900KG)

- 300 系列不銹鋼
- 能承受高溫度、高強度
- 可以和不銹鋼鍊條組合
- 100%保證測試

## 不銹鋼吊鉤

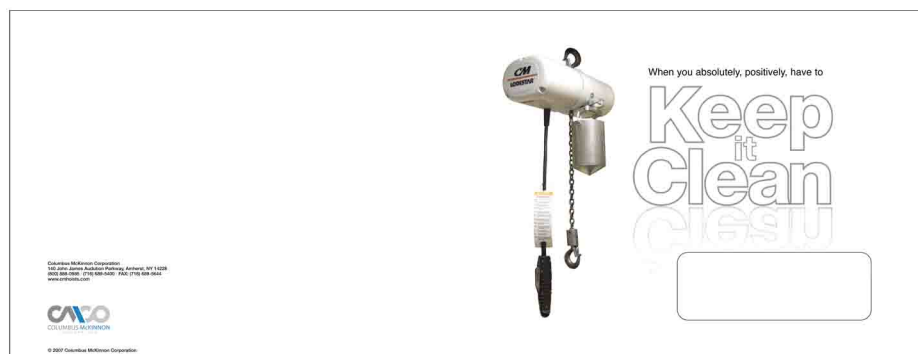


尺寸 9/32" 到 1/2"(7 到 13mm)

安全荷重

到 11,250LB(5,100KG)

- 可以容易的組成單串或雙串吊鍊組
- 抗腐蝕性
- 比 HA800 更耐高溫
- 100%保證測試



When you absolutely, positively, have to  
**Keep it Clean**

Columbus McKinnon Corporation  
100 Old Derby Road, Columbus, OH 43228  
614.881.1000 • Fax: 614.881.1001 • www.cmco.com

**CMCO**  
COLUMBUS MCKINNON

© 2007 Columbus McKinnon Corporation

# 無塵室其他相關產品 Other Products for Clean Room

## Zephyr 無塵室手拉吊車



- 1/4 噸到 10 噸能力
- 載重鍊，上下鉤頭和下鉤頭和下鉤頭滑車均為不銹鋼
- 符合美國 FDA 食品藥物部門規定，食品級潤滑油
- 包括有不銹鋼吊車輪，手拉鍊和鍊袋，不銹鋼或鍍鎳外殼附有環油樹脂油漆

## 無塵室小車

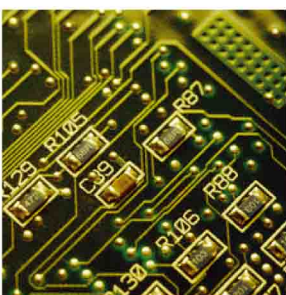


- 1/4 ~ 2 噸 較大需分別
- 整體結構為防腐蝕不銹鋼，非常適合使用在無塵室環境
- 每個輪子使用 2 個不銹鋼防塵滾珠軸承
- 適合多濕環境和沖洗區域
- 額定溫度到 225°F 週溫(107°C)

## 635 馬達驅動小車

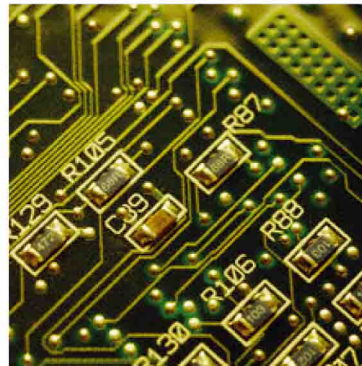


- 1/8 噸 ~ 2 噸能力
- 防水電氣箱
- 符合美國 FDA 食品藥物管理部門規定，白色環氧粉體塗層外結構
- 不銹鋼和鍍鎳五金配件
- 不銹鋼車輪



When you absolutely, positively, have to

# Keep it Clean



## Clean Room—Clean Power.

Enjoy proven CM Lodestar Electric Chain Hoist performance in any clean room, from basic wipe down applications to complete wash-down environments. The Lodestar provides reliability and consistency for a wide array of applications. From food processing to circuit board assembly, the Lodestar means maximum production and long-life. Whether your work area includes high humidity, corrosive materials, or sanitary conditions, the Lodestar offers superior efficiency and versatility.

From its stainless steel load chain to its sealed, weather-proof construction, the Lodestar exceeds the standards necessary for clean room operation.

Using non-oxidizing grease rather than oil for lubrication eliminates drips, and the stainless steel load chain guards against flaking or peeling.

Regardless of the industry, hoist operators constantly rely on the Lodestar chain hoist for their material handling needs. Whether it is for handling food, pharmaceuticals, or electronics, put the world's most popular electric hoist and our company's 130 years of experience to work for you.



## CM Clean Room Hoist-The Perfect Choice For Sensitive Environments

- 1/4, 1/2, 1 and 2 ton single and two-speed hoists
- Stainless steel load chain, upper hook, lower hook and block assembly, and chain container (2 ton available with nickel-plated chain only)
- FDA-approved white epoxy powder coat paint. Also available with unpainted cast aluminum housings or electroless nickel plated housings in lieu of epoxy paint
- NEMA 4 and NEMA 4X control stations
- Sealed weather-proof construction and gear train lifetime lubricated with non-oxidizing grease
- 115/230 1-phase (single speed only) and 230/460 3-phase models
- Lifetime warranty

### Features

#### Stainless Steel Chain Sizes Available from

9/32" to 1/2" (7 to 13 mm)

#### Working Load Limit

Up to 6,500 lb. (2,950 kg)

- Made from 300 series stainless
- Higher temperature resistance than standard grade 80 chain
- Safely used in the food handling industry



#### Stainless Master Link Sizes Available from

9/32" to 1/2" (7 to 13 mm)

#### Working Load Limit

Up to 13,000 lb. (5,900 kg)

- Made from 300 series stainless
- Retains strength in high temperatures
- Designed to be used with stainless steel chain



#### Stainless Slings Sizes Available from

9/32" to 1/2" (7 to 13 mm)

#### Working Load Limit

Up to 11,250 lb. (5,100 kg)

- Available in single and double slings
- Corrosive resistant
- Higher temperature resistance than standard grade 80 chain

Product Code	Model	Capacity	Speed (FPM)	Voltage	Lift (FT)
2722/2788CR10	B	1/4 TON	16	115-1-60	10
2722/2788CR15	B	1/4 TON	16	115-1-60	15
2722/2788CR20	B	1/4 TON	16	115-1-60	20
2725/2788CR10	B	1/4 TON	16	230/460-3-60	10
2725/2788CR15	B	1/4 TON	16	230/460-3-60	15
2725/2788CR20	B	1/4 TON	16	230/460-3-60	20
2752/2788CR10	F	1/2 TON	16	115-1-60	10
2752/2788CR15	F	1/2 TON	16	115-1-60	15
2752/2788CR20	F	1/2 TON	16	115-1-60	20
2755/2788CR10	F	1/2 TON	16	230/460-3-60	10
2755/2788CR15	F	1/2 TON	16	230/460-3-60	15
2755/2788CR20	F	1/2 TON	16	230/460-3-60	20
2762/2789CR10	H	1 TON	8	115-1-60	10
2762/2789CR15	H	1 TON	8	115-1-60	15
2762/2789CR20	H	1 TON	8	115-1-60	20
2765/2789CR10	H	1 TON	8	230/460-3-60	10
2765/2789CR15	H	1 TON	8	230/460-3-60	15
2765/2789CR20	H	1 TON	8	230/460-3-60	20

### Additional Products For Sensitive Environments



**"Zephyr" Clean Room Hand Hoist**

- 1/4-ton to 10-ton capacity
- Stainless steel load chain, upper and lower hooks, and lower hook block
- FDA approved food grade epoxy paint
- Food grade lubricants
- Wide array of available options, including stainless steel lift wheel, hand chain wheel, and chain container; solid stainless steel or electroless nickel plated housings in lieu of epoxy painting



**The "Ultimate Clean Room Trolley"**

- 1/4-ton to 2-ton capacity standard Larger units built to order
- Constructed entirely of corrosion resistant stainless steel, these trolleys are well suited for virtually all clean room environments
- Two stainless steel precision ball bearings per wheel, sealed and lubricated for life
- Ideal for humid environments and wash-down areas
- Rated for up to 225 degrees Fahrenheit ambient temperature



**CM 635 "Motorized Trolley"**

- 1/8-ton thru 2-ton capacities
- Weather-proofed electrical enclosure
- FDA approved white epoxy powder coat painted frames
- Stainless steel and nickel plated hardware
- Stainless steel trackwheels
- Trolley fits American Standard beams as well as Wide Flange Beams including 3.25" patented tracks

